

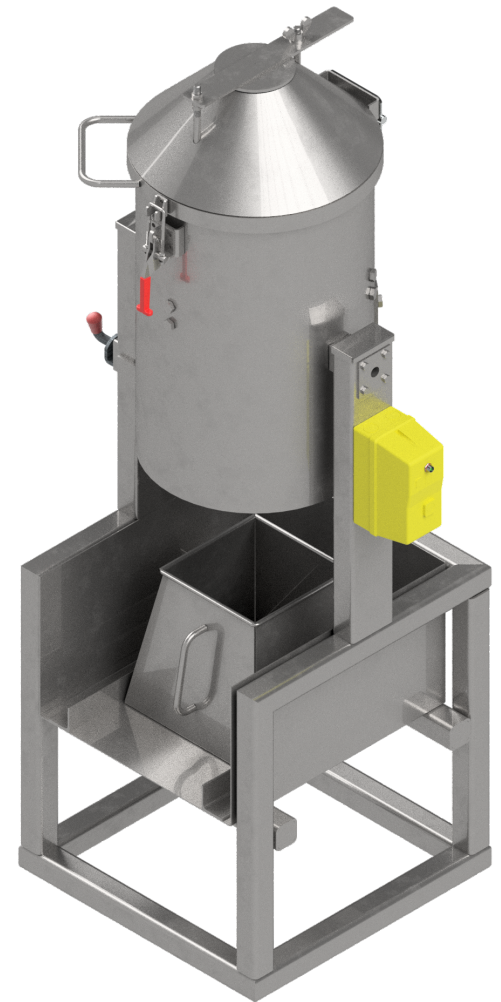
Cremulator for cremators

Cremulator

The cremulator allows for the respectful and hygienic further processing of the cremated human remains.

Remains left from the cremation are further processed into fine ashes by the MT15Crem cremulator. Finer ashes allow for the easy separation of metal particles that may be present.

Cremulator Specifications	
Make	Macrotec
Model	MT15Crem
Material	Stainless Steel
Power input	0.37kW, 220V
Volume	15l
Diameter	320mm
Chamber Depth	240mm
Weight	92 kg



Features

- The balanced design of the cremulator allows for ease of operation by a single user, with an additional locking mechanism to ensure the stability of the chamber.
- The dual-acting lid allows for easy loading and unloading of the remains.
- The cremulator operates silently and has an indicator light when in operation.